



Flight Plan & Site Survey

Created using **RPAS Wilco**[®]

Operation Name:	Algonquin Ezylyfe Ln
Pilot Name:	██████████
Pilot Certificate:	██████████
Flight Start:	January 21, 2023 3:56 PM
Flight End:	January 21, 2023 5:56 PM
Flight Area (Latitude):	46° 8' 57.95" N (46.149)
Flight Area (Longitude):	77° 33' 42.83" W (-77.562)
Altitude - Radius:	Alt: 700 ft - Rad: 926.0 m (0.5 nm)
Airspace:	RESTRICTED
FIR - Contact:	CZYZ - 905-676-4509
Weather:	-7.1 Celsius - Partially cloudy

Please ensure you received all required authorizations prior to flight.

Disclaimer

This Site Survey was created using RPAS Wilco by AIM Robotics. The flight plan contained is intended only for RPAS flights on the date/time and location specified. The user accepts all responsibility for the accuracy and completeness of the information contained.

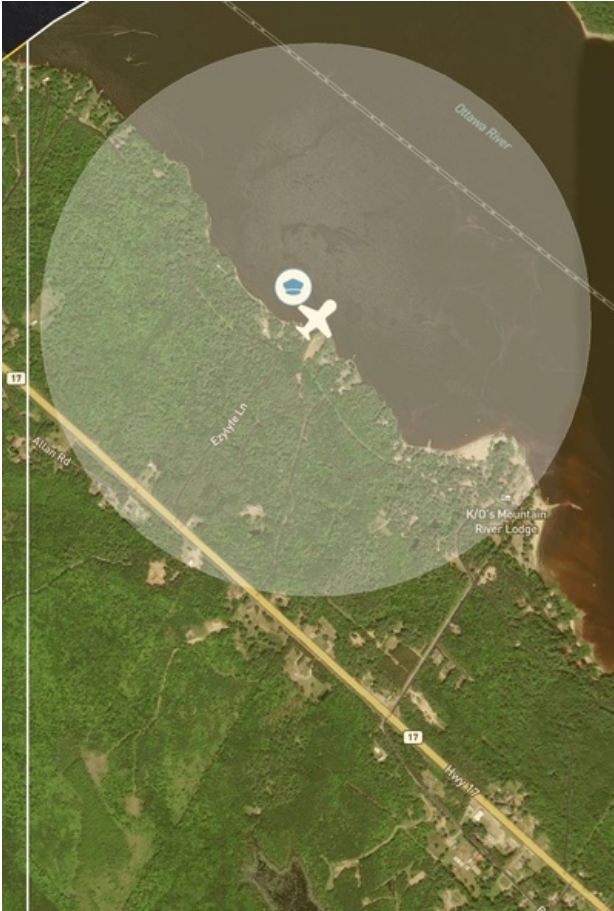
For the complete Terms & Conditions, see

<https://rpswilco.com/#/tnc>



Included

- Site Survey
- Obstacles (if available)
- Nearby Aerodromes
- Canadian Aviation Regulations
- GFA
- Aerodrome Supplements
 - METAR & TAF (if available)
 - NOTAMS
 - CFS

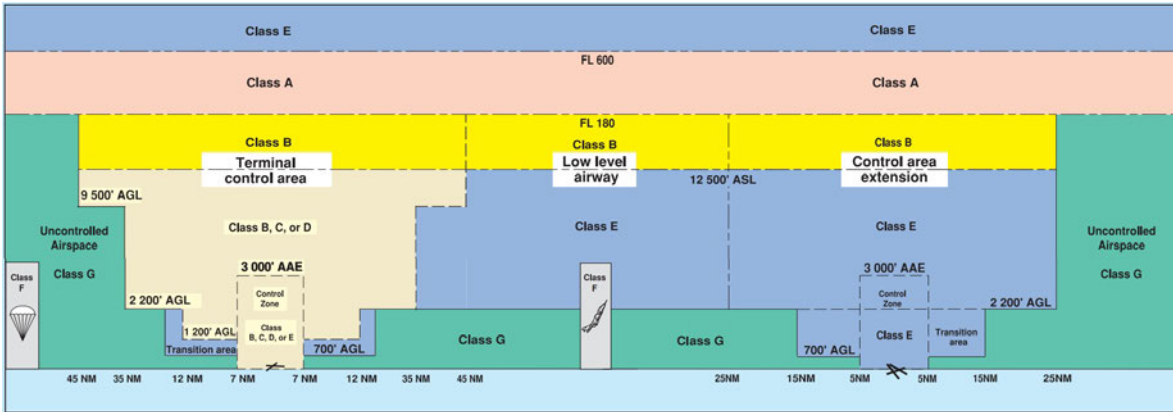
Flight Map



MAP Details

	Latitude	Longitude
 MODEL	46° 8' 57.95" N (46.149)	77° 33' 42.83" W (-77.562)
 Pilot	46° 9' 1.55" N (46.1504)	77° 33' 46.43" W (-77.5629)

Airspace Classification



Overlying Airspaces

Class	Name	Floor	Ceiling
R	CYR541 CFB PETAWAWA, ON Ocs1 by NOTAM	3000MSL	FL180
B	Southern Ontario Low Level Control Area CAE	12500MSL	18000MSL
E	Southern Ontario Low Level Control Area CAE	3500MSL	12500MSL

Nearest Aerodromes & Distance from Operation

ROLPH (CPH2 AERODROME Reg)	Lat: 46.117	Long: 77.533	4.238 KM	2.29 NM
PETAWAWA (CYWA HELIPORT Mil)	Lat: 45.95	Long: 77.317	29.137 KM	15.73 NM
PEMBROKE (CYTA AERODROME Cert)	Lat: 45.864	Long: 77.251	39.798 KM	21.49 NM
PEMBROKE (REGIONAL HOSPITAL) (CNG5 HELIPORT Cert)	Lat: 45.815	Long: 77.108	51.116 KM	27.6 NM

Weather Information for Mission Day

Summary: Partly cloudy throughout the day.

Condition	Temperature	Feels Like	Precipitation	Visibility	Cloud Coverage	Wind Speed	Humidity
Partially cloudy	7.1 Celsius	9.9 Celsius	0.0 %	16.0 Km	61.1 %	11.2 kph	83.1 %

Canadian Aviation Regulations

Division III — General Operating and Flight Rules

For full listing please visit <https://laws-lois.justice.gc.ca/eng/regulations/SOR-96-433/FullText.html#s-901.27>

Visual Line-of-sight

- **901.11 (1)** Subject to subsection (2) no pilot shall operate a remotely piloted aircraft system unless the pilot or a visual observer has the aircraft in visual line-of-sight at all times during flight.
- **(2)** A pilot may operate a remotely piloted aircraft system without the pilot or a visual observer having the aircraft in visual line-of-sight if the operation is conducted in accordance with a special flight operations certificate — RPAS issued under section 903.03.

Procedures

- **901.23 (1)** No pilot shall operate a remotely piloted aircraft system unless the following procedures are established:
 - **(a)** normal operating procedures, including pre-flight, take-off, launch, approach, landing and recovery procedures; and
 - **(b)** emergency procedures, including with respect to
 - **(i)** a control station failure,
 - **(ii)** an equipment failure,
 - **(iii)** a failure of the remotely piloted aircraft,
 - **(iv)** a loss of the command and control link,
 - **(v)** a fly-away, and
 - **(vi)** flight termination.
- **(2)** If the manufacturer of the remotely piloted aircraft system provides instructions with respect to the topics referred to in paragraphs (1)(a) and (b), the procedures established under subsection (1) shall reflect those instructions.
- **(3)** No pilot shall conduct the take-off or launch of a remotely piloted aircraft unless the procedures referred to in subsection (1) are reviewed before the flight by, and are immediately available to, each crew member.
- **(4)** No pilot shall operate a remotely piloted aircraft system unless the operation is conducted in accordance with the procedures referred to in subsection (1).

Site Survey

901.27 No pilot shall operate a remotely piloted aircraft system unless, before commencing operations, they determine that the site for take-off, launch, landing or recovery is suitable for the proposed operation by conducting a site survey that takes into account the following factors:

- **(a)** the boundaries of the area of operation;
- **(b)** the type of airspace and the applicable regulatory requirements;
- **(c)** the altitudes and routes to be used on the approach to and departure from the area of operation;
- **(d)** the proximity of manned aircraft operations;
- **(e)** the proximity of aerodromes, airports and heliports;
- **(f)** the location and height of obstacles, including wires, masts, buildings, cell phone towers and wind turbines;
- **(g)** the predominant weather and environmental conditions for the area of operation; and
- **(h)** the horizontal distances from persons not involved in the operation.

Operations at or in the Vicinity of an Aerodrome, Airport or Heliport

- **901.47 (1)** No pilot shall operate a remotely piloted aircraft at or near an aerodrome that is listed in the *Canada Flight Supplement* or the *Water Aerodrome Supplement* in a manner that could interfere with an aircraft operating in the established traffic pattern.
- **(2)** Subject to section 901.73 no pilot shall operate a remotely piloted aircraft at a distance of less than
 - **(a)** three nautical miles from the centre of an airport; and
 - **(b)** one nautical mile from the centre of a heliport.
- **(3)** No pilot shall operate a remotely piloted aircraft at a distance of less than three nautical miles from the centre of an aerodrome operated under the authority of the Minister of National Defence unless the operation is conducted in accordance with a special flight operations certificate — RPAS issued under section 903.03.

Records

- **901.48 (1)** Every owner of a remotely piloted aircraft system shall keep the following records:
 - **(a)** a record containing the names of the pilots and other crew members who are involved in each flight and, in respect of the system, the time of each flight or series of flights and
 - **(b)** a record containing the particulars of any mandatory action and any other maintenance action, modification or repair performed on the system, including
 - **(i)** the names of the persons who performed them,
 - **(ii)** the dates they were undertaken,
 - **(iii)** in the case of a modification, the manufacturer, model and a description of the part or equipment installed to modify the system, and
 - **(iv)** if applicable any instructions provided to complete the work.
- **(2)** Every owner of a remotely piloted aircraft system shall ensure that the records referred to in subsection (1) are made available to the Minister on request and are retained for a period of
 - **(a)** in the case of the records referred to in paragraph (1)(a), 12 months after the day on which they are created; and
 - **(b)** in the case of the records referred to in paragraph (1)(b), 24 months after the day on which they are created.
- **(3)** Every owner of a remotely piloted aircraft system who transfers ownership of the system to another person shall, at the time of transfer, also deliver to that person all of the records referred to in paragraph (1)(b).

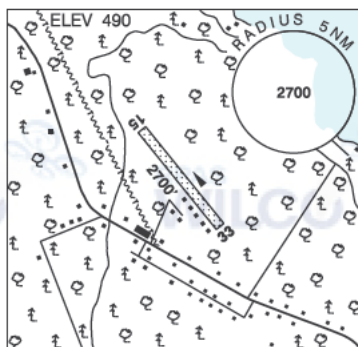
ONTARIO

AERODROME/FACILITY DIRECTORY

DEEP RIVER / ROLPH ON

CPH2

REF	N46 07 W77 32 2NW 13°W UTC-5(4) Elev 490' A5000 A5001
OPR	Gary McAnulty 613-584-4011 Reg
PF	B-1,2,5 C-3,4,6
FLT PLN	
FIC	London 866-WXBRIEF (Toll free within Canada) or 866-541-4104 (Toll free within Canada & USA)
RWY DATA	Rwy 15/33 2700x150 turf
RCR	Opr Ltd win maint. Soft when wet.
COMM	
ATF	tfc 122.8 5NM 3500 ASL



ONTARIO

AERODROME/FACILITY DIRECTORY

PETAWAWA ON (Heli)

CYWA

REF	N45 57 00.40 W77 19 03.26 3.5NW 13°W UTC-5(4) Elev 427' A5000 A5001 LO6 LO7	
OPR	DND 613-687-5511 Ext 7880 427 sqn ext 8000 450 sqn CSN 319-677-7880/8000 Mil PPR 48 hrs DND.PET.427.ATC- CCA MND@Forces.gc.ca	
PF	B-1 C-2,3,5	
CUST	Inbd mil flt via Pembroke Mon to Fri 1330-2130Z± 613-991-0508 O/T 613-998-3590	
FLT PLN		
FIG	London 866-WXBRIEF (Toll free within Canada) or 866-541-4104 (Toll free within Canada & USA)	
MIL WX	613-687-5511 Ext 7702 Met brief for mil only. Lcl Met Section CSN 677-7987 for 427 sqn 677-8015 for 450 sqn ltd hrs. O/T JMC 1-800-WXMETEO (996-3836) or CSN 432-2613 (See COMM). METAR during mil flt ops, TAF during mil flt ops.	
SERVICES		
FUEL	F-34	
OIL	156	
ARFF	CAT 4	
MIL ADV	427 sqn 297.4 613-687-5511 Ext 7880 CSN 319-677-7880 450 sqn 230.4 613-687-5511 Ext 8000 CSN 319-677-8000	
HELI DATA	FATO 17H(165°)/35H(345°) 1630'. Reinforced concrete FATO East 150' x 150' CONC FATO TAMS 160' x 160' CONC	
RCR	Opr	
LIGHTING	35H HALS. FATO East apch lghts (7 bars of 3 lghts).	
COMM		
GND MF	121.9 Petawawa advsy 126.4 250.1 advsy opr 1130-0700Z± Mon-Fri, exc hols O/T ttc 126.4. Opr dates and hrs may vary without notice. Ctc Sqn Ops 613-687-5511 Ext 7880 (427 sqn) Ext 8000 (450 sqn) O/T PPR 48hrs min thru Petawawa BOps 613-687-5511 Ext 6403 5NM 3400 ASL (CAR 602.98)	
MIL PMSV	126.4 250.1 49.9 FM Call Sign Rng C I 297.4 ltd hrs	
NAV		
NDB	YWA 516 (M) N45 53 41 W77 16 18 Unmonitored when ADV clsd.	
PRO	SEE PEMBROKE/PETAWAWA VTPC Rgt hand circuits FATO 35H (CAR 602.96). To maintain required separation fr CYR 511, acct dep or arr CYWA IFR must rte via YTA NDB, ie dep rte CYWA DCT YWA DCT YTA BPOC, or CYWA DCT YTA; arr rte YTA DCT YWA. A/D located within CYR 511, ctc Petawawa Flt Advsy to ensure range safe. Overflight of ammunition compound 3.5NM WNW of heli proh. Active Range info hru Range Control 49.90 FM or 126.4. When Flt Advsy clsd ctc 613-687-5511 Ext 5203.	
CAUTION	Parajump area 6NM S, 5NM radius of N45 52 W77 18 (over Pembroke A/D) 12,500 ASL, ocsd daylight by NOTAM. HELI TRAFFIC: Extv low-level mil heli activity at night to the NE, S and W of the Pembroke and Petawawa airports.	

ONTARIO

AERODROME/FACILITY DIRECTORY

PEMBROKE ON

CYTA

REF	N45 51 52 W77 15 05 5 2NW 13°W UTC-5(4) Elev 532' A5000 A5001 LO6 LO7 HI5 CAP	
OPR	Pembroke & Area Aprt Comsn 613-687-5300/4910 maint or 855-539-3019 11-21Z† Mon-Fri, 13-21Z† Sat, Sun & hol. APM after hrs Cert Ldg fees apply to commercial acft.	
PF	A-1,2 ltd hrs, 6,7	
CUST	Mil fit only	
FLT PLN	FIC London 866-WXBRIEF (Toll free within Canada) or 866-541-4104 (Toll free within Canada & USA)	
SERVICES	Call-out chg may be levied for one or more svcs. FUEL 100LL, JA-1 11-21Z† Mon-Fri, 13-21Z† Sat, Sun & hol OIL 80, 100, 100W, 15W50 S 1,2,3,4,5,6,7 SUP FL D-ice JASU CE14	
RWY DATA	Rwy 17(172°)/35(352°) 5000x100 asphalt	
RWY CERT	Rwy 17/35 AGN IIIB	
TWY	Twy B seasonal use, May 1-Oct 31, no win maint.	
RCR	Opr 11-21Z† Mon-Fri, 13-21Z† Sat, Sun & hol. CRF/RSC avbl ltd hrs. PLR/PCN	
LIGHTING	17-(TE ME)V1, 35-AD AS(TE ME) V1 ARCAL-122.8 type K	
COMM	ATF UNICOM (AU) ltd hrs O/T tfc 122.8 5NM 3500 ASL PAL Montréal Ctr 135.2 A/G Petawawa Advsy 126.4 or 250.1 13-2130Z† Mon-Fri, O/T PPR, DND 613-588-5789	
NAV	NDB YTA 409 (L) N45 48 12 W77 13 06	
PRO	MIL Crash response for mil a/c provided by GRN Petawawa, 30 min deployment time rqrd. Mil call CSN 677-5555, com 613-588-5555. Airborne diversions thru Petawawa advsy Mon-Fri 13-2130Z† on 126.4 250.1 or thru Québec FIC 126.7 123.15. Emerg crew monitors 122.8R when in posn at CYTA.	
CAUTION	Parachuting over aprt 12,500 ASL & below, ocsl daylight by NOTAM. HELI TRAFFIC: Extv low-level mil heli activity at ngt E & NE of A/D.	

ONTARIO

AERODROME/FACILITY DIRECTORY

PEMBROKE (REGIONAL HOSP) ON (Heli)

CNG5

REF	N45 48 55 W77 06 28 Adj 13°W UTC-5(4) Elev 496' A5000 A5001
OPR	Pembroke Regional Hosp 613-732-2811 Cert PPR
FLT PLN	
FIC	London 866-WXBRIEF (Toll free within Canada) or 866-541-4104 (Toll free within Canada & USA)
HELI DATA	86' x 86' asphalt 114' x 114' Max heli overall length 57.5'
RCR	Opr
LIGHTING	DR RY(LO) RF(FL) ARCAL-122 9 type J
PRO	Arr/dep 330° fr heli, slope 8% (H3) day/night use.

